

London 2019

21st – 25th Jan



Monday travel

- Minibus from CM? We would leave CM @ 7.30am Prompt.
- All children will depart Tiverton Parkway @0906. Please be at the train station @0845.
- Mrs Bull (EvCo), Mrs Holmes, Ms Russell and Mr Guyler are accompanying the children for the week.
- Children will be given red parka coats early next week to wear. These are lovely and warm and bought especially for London Residentials!

Baggage



- Children are in charge of their own luggage and we have some walking to do on both main journeys!
- Please ensure they have small suitcases that they can manage themselves
- Uniform every day – please make sure they have enough sets of uniform for the week (plus a smart “glam” outfit for our West End trip)
- Rucksacks (& Coats) will be provided next week so that they can be used as day bags.
- Monday’s Packed lunch in a disposable bag please.

Underground tube



- We stay very close to Gloucester Road Tube station
- Moving around sessions: practise ahead of time about how we get on and off the tube
- All children have a red wristband with School contact details
- Guards know us and call ahead to let other stations know



Monday:

- Science museum!
- We'll visit Wonderlab, watch "A Beautiful Planet" in 3D at the IMAX and generally have a great time!
- Then check in at Baden Powell House and head off for dinner at Garfunkels



Tuesday

Morning

- We're off to the British Museum!
- Huge array of exhibits including Africa, China and Vikings – topics we are studying across the schools.



Afternoon

- We'll visit Leicester Square (Lego Store) and head to China town for a Chinese meal



Wednesday

- House of Parliament
- Tour of both Houses
learning about the Story
of Parliament



- London Eye and
River Cruise

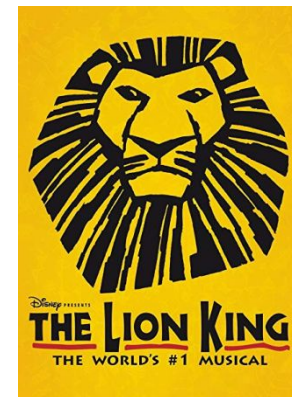


Thursday

Tower of London:
huge amount to see
and do here – we'll
see the Crown
Jewels, visit the
White Tower and
explore crime and
punishment through
the ages.



Then we'll head
home to glam
up....before
heading to the West
End!





Friday:



Natural History Museum

Chance to see exhibits and visit the excellent gift shop



Train home!

- 1503 train from London Paddington
- Arrival at Tiverton Parkway @1715
- Arrangements for the last section of the trip to CM?